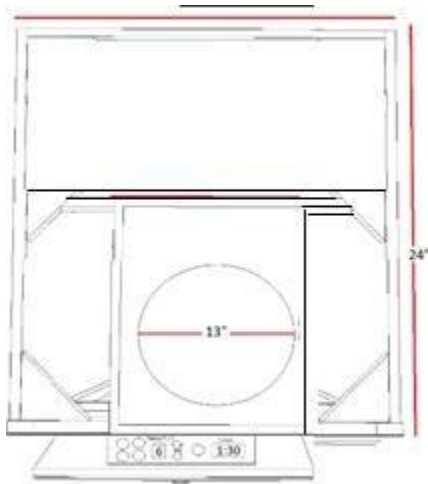


15" InvisaCOOK

400-1 Unit Series



Technical Details	
1 Unit Series	Element Performance
Item Wight	12.5 Pounds
Dimensions	13.75 x 10.5 x 2 Inches
Power Requirements	110 DC
AMP Capacity	10A
Wattage	1500-1800 W (total)
Work Temperature	15-55 Degree Celsius
Voltage / VAC	50/60 Hz, 110-120
Unit Power	2.0
KW / HR	Approx. 4823 Each, BTU/HR
Max Power	4.6 KW/HR

Features & Benefits

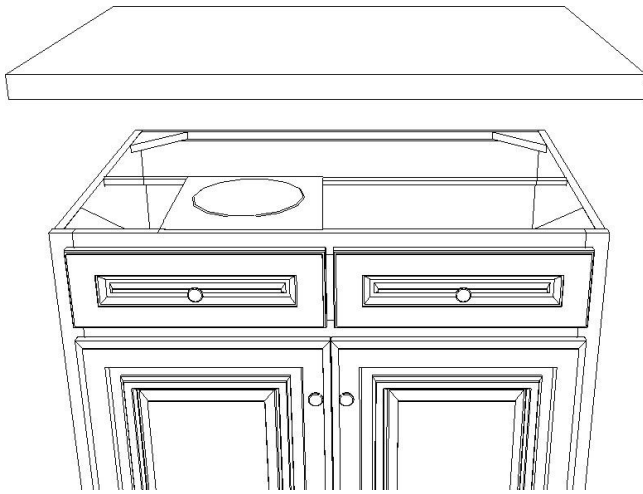
- Invisa-induction is faster than gas and Electric Cooktops. Precise cooking, Easy Cleaning and more Efficient
- Invisacook is unseen cooking process from underneath your countertops, so you'll have that flawless and seamless kitchen.
- Regulates temperatures continuously, during the cooking process and adjusts as needed to even cook temperatures
- Each element has an independent countdown timer, so nothing will ever be left on to burn
- Each element has its own shutdown switch when not being uses

Go Green Kitchen & Home Design Center

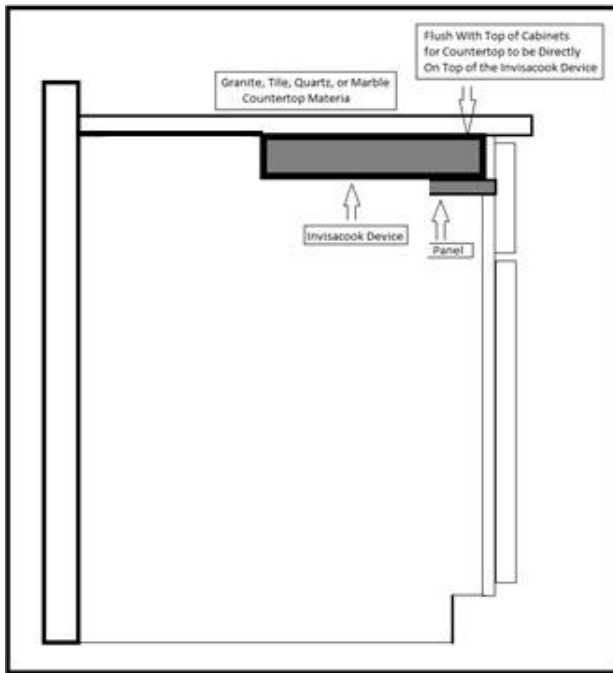
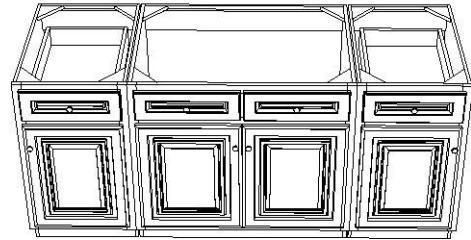
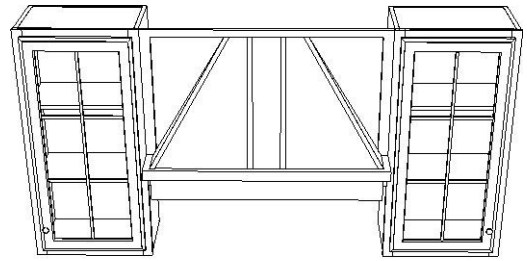
3030 Veterans Rd. W. Staten Island,
NY 10309

www.gogreenbuildingsupply.com

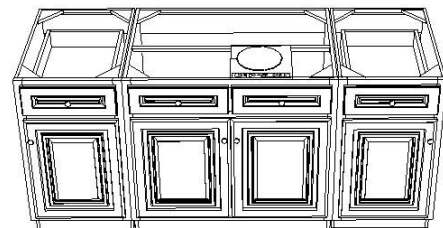
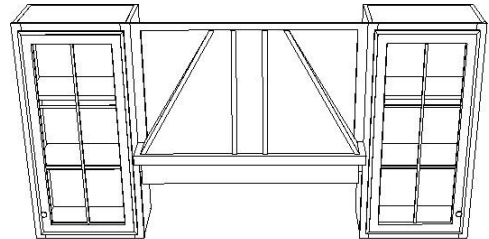




STEP 1



STEP 2



STEP 3

