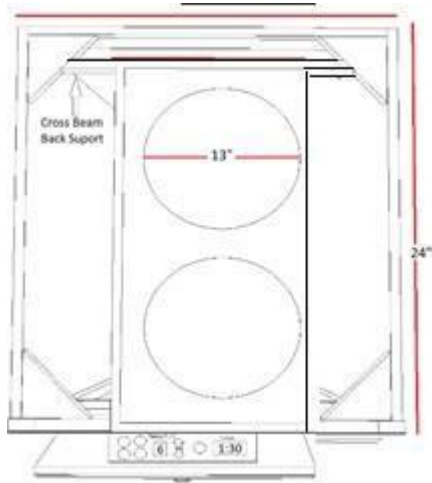


30" InvisacOOK

400-2 Unit Series



Go Green Kitchen & Home Design Center
3030 Veterans Rd. W. Staten Island,
NY10309

www.gogreenbuildingsupply.com

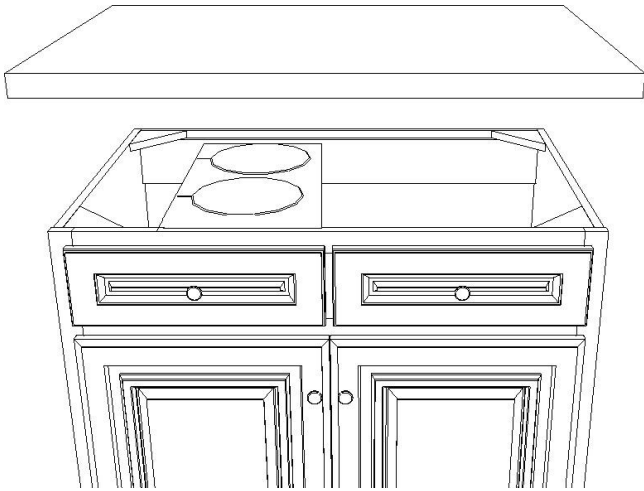
Technical Details

2 Unit Series	Element Performance
Item Wight	15.5 Pounds
Dimensions	19 x 11 x 2 Inches
Power Requirements	110 DC
AMP Capacity	15 A
Wattage	1800 W (total)
Work Temperature	15-55 Degree Celsius
Voltage / VAC	50/60 Hz, 110-120
Unit Power	2.0
KW / HR	4823 Each, BTU/HR
Max Power	4.6 KW/HR

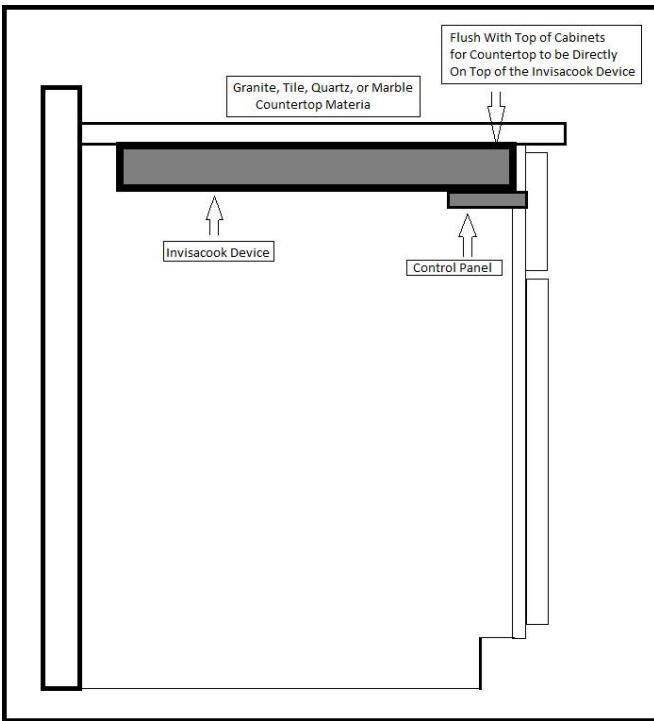
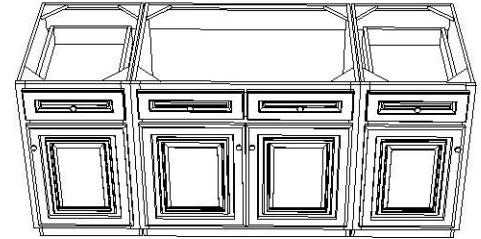
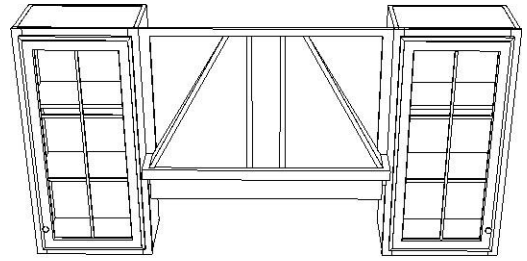
Features & Benefits

- Invisacook is faster than gas and Electric Cooktops. Precise cooking, Easy Cleaning and more Efficient
- Invisacook is unseen cooking process from underneath your countertops, so you'll have that flawless and seamless kitchen.
- Regulates temperatures continuously, during the cooking process and adjusts as needed to even cook temperatures
- Each element has an independent countdown timer, so nothing will ever be left on to burn
- Each element has its own shutdown switch when not being uses

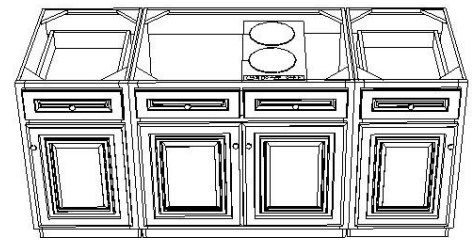
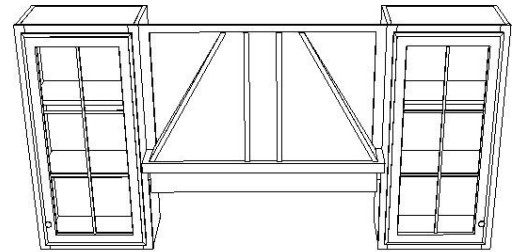




STEP 1



STEP 2



STEP 3

